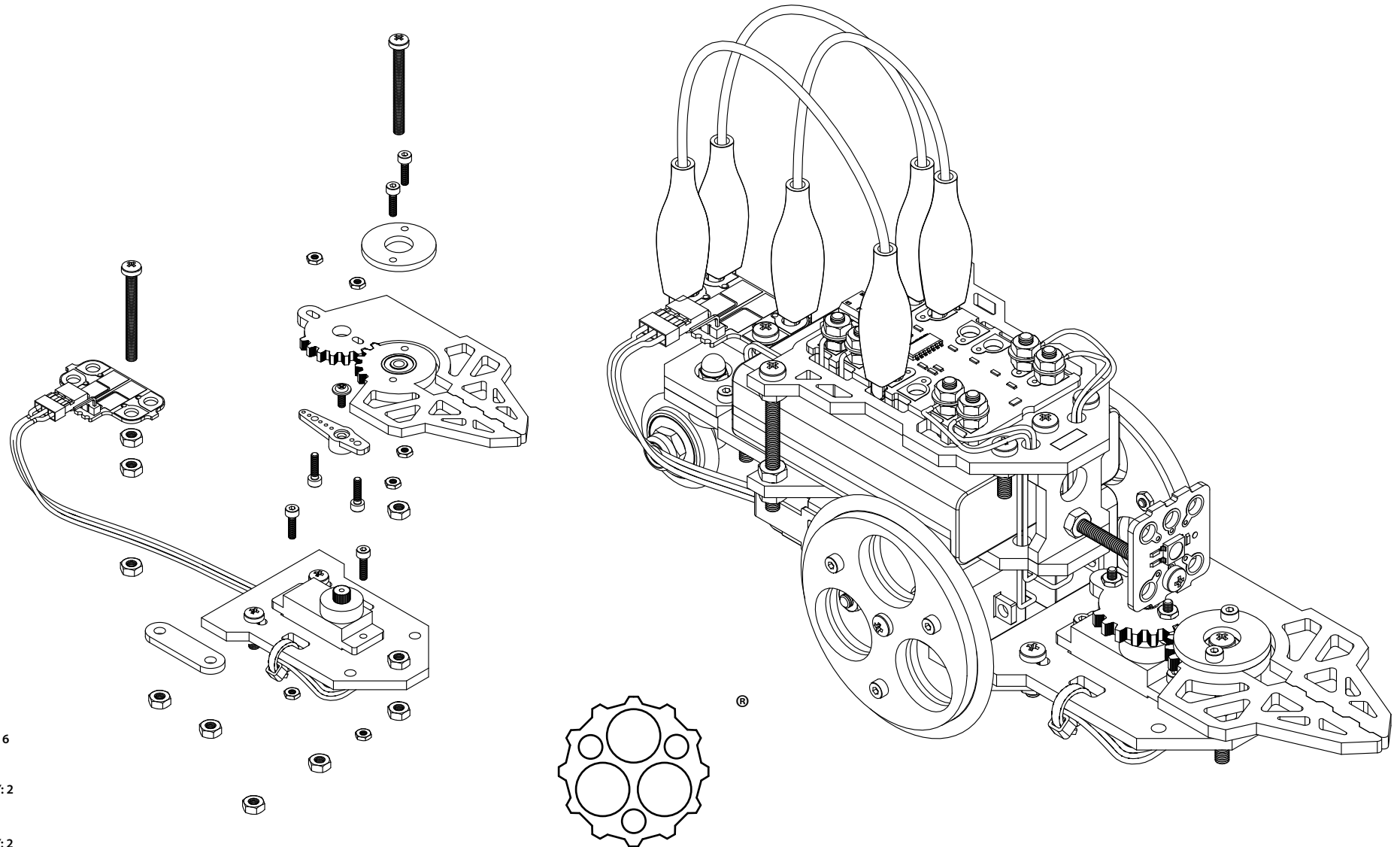


CRV_JAWS[®]

WRITE PROGRAMS TO ACTIVATE THE JAWS AND COMPLETE RETRIEVAL MISSIONS

<mission information contained within - authorized personnel only>



Fasteners Inventory:

M2 Nut / QTY: 6



M3 Nut / QTY: 10



Servo Horn Screw / QTY: 1



M2 8 MM L Caps Head / QTY: 6



M3 12 MM L Pozzi-Drive / QTY: 2



M3 30 MM L Pozzi-Drive / QTY: 2



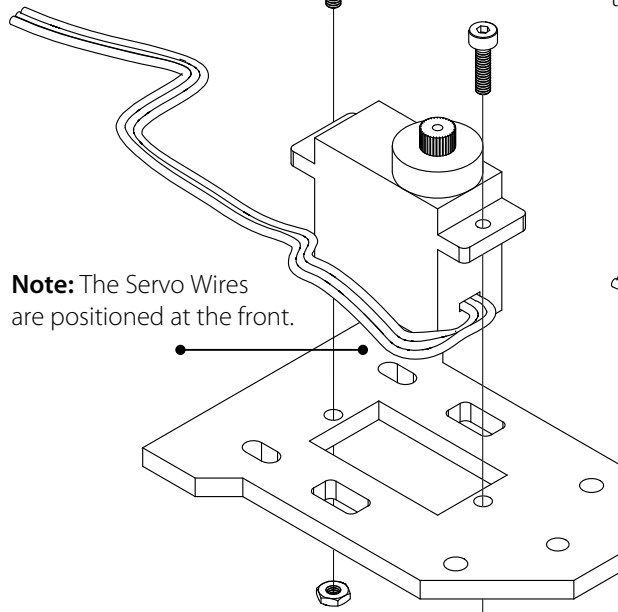
machine realm

CRV_JAWS

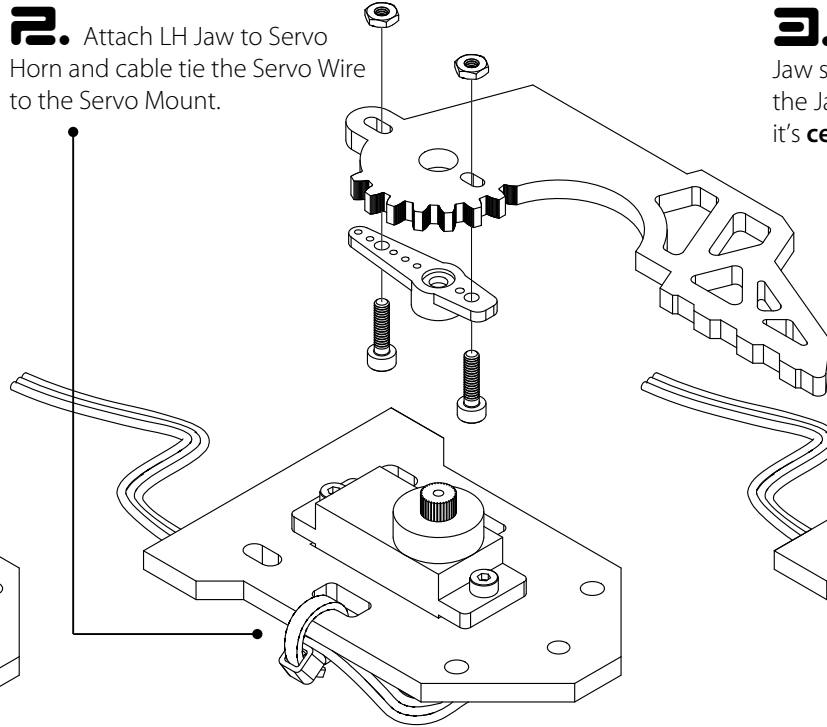
machinerealm.com

Stage 01_Servo/Servo Mount and Jaws Assembly - Top Tips: Remove protective film from laser cut acrylic components and do not over tighten nuts.

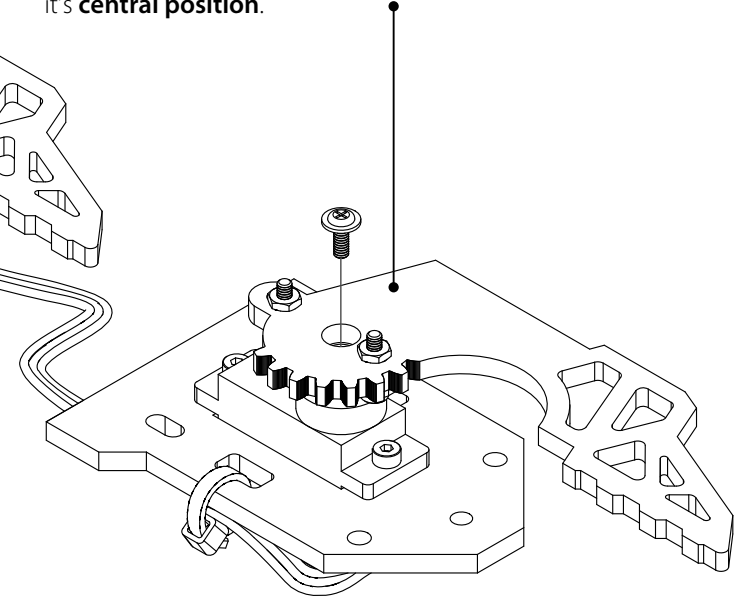
1. Fit Servo to Servo Mount.



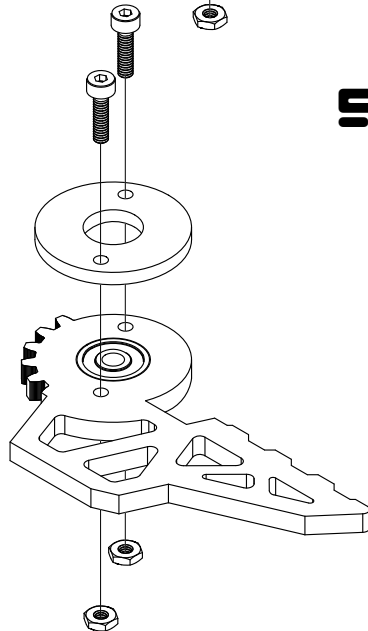
2. Attach LH Jaw to Servo Horn and cable tie the Servo Wire to the Servo Mount.



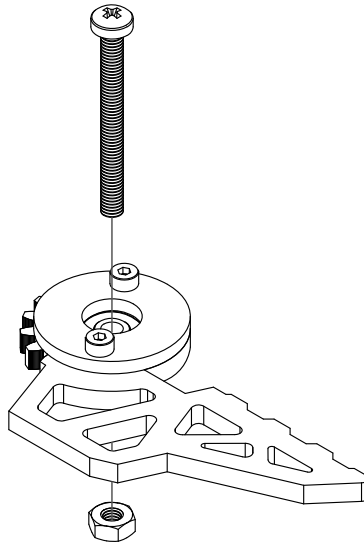
3. When mounting the Servo Horn and Jaw sub-assembly to the Servo Spline, ensure the Jaw is facing forward and the Servo is set to its **central position**.



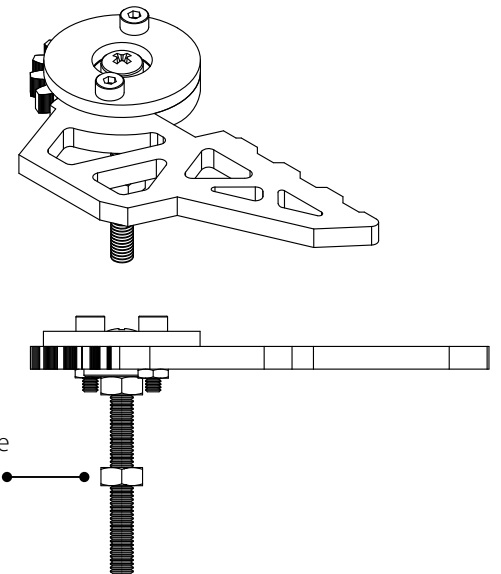
4. RH Jaw assembly.



5.



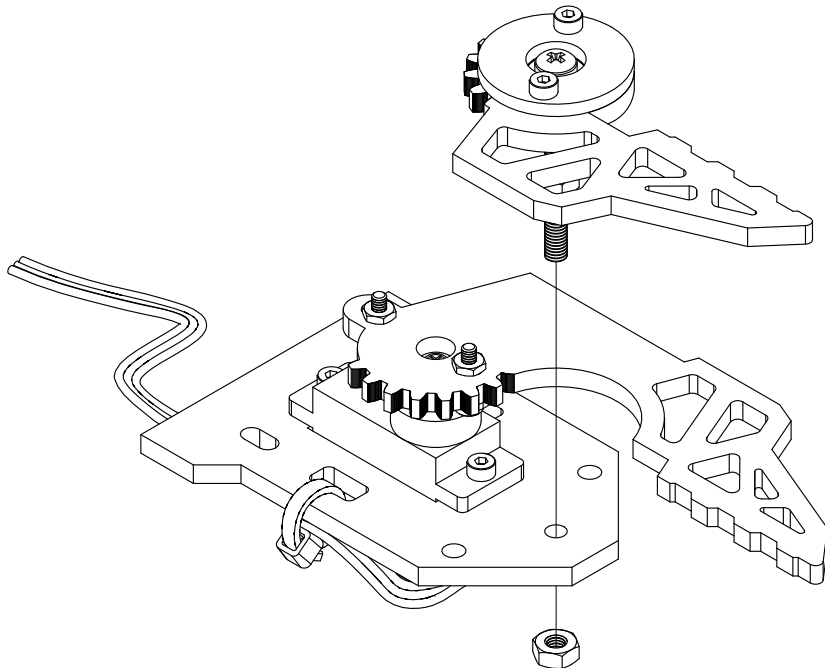
6.



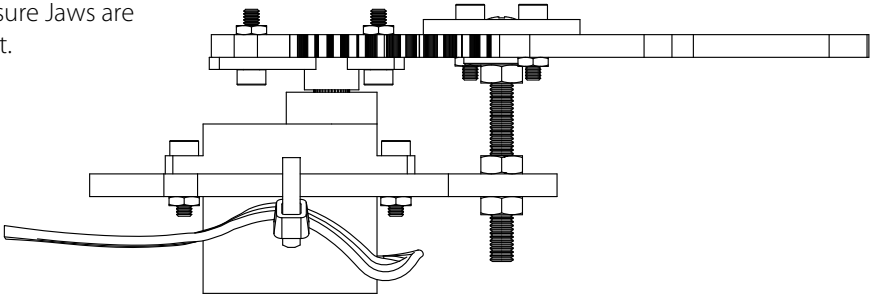
Add an M3 Nut to the M3 X 30MM L Screw as shown.

Stage 02_Mounting Jaws Assembly to CRV Chassis.

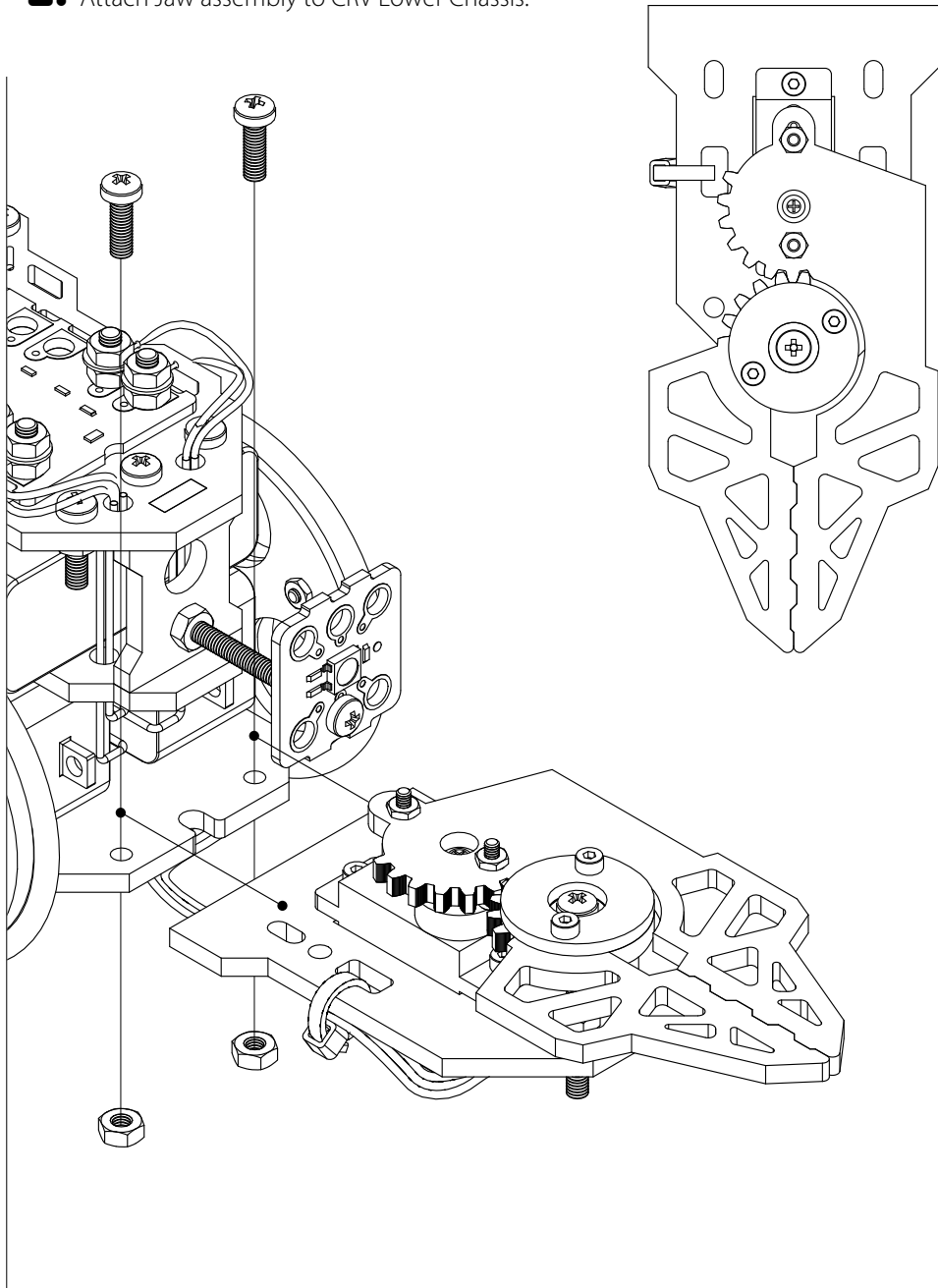
7. Mount RH JAW to Servo chassis.



8. Ensure Jaws are coincident.

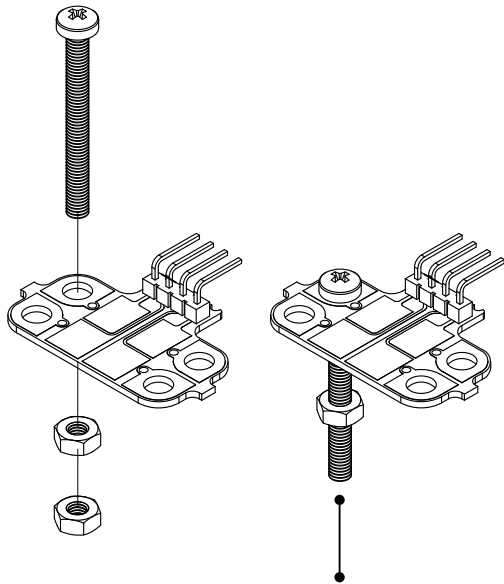


9. Attach Jaw assembly to CRV Lower Chassis.



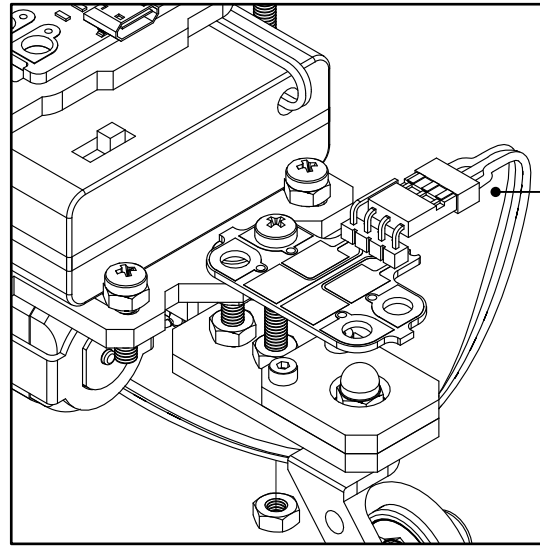
Stage 03_Mounting Crumbliser and Cable Retainer to CRV - Top Tips: Do not over tighten M3 Nuts.

10. Secure the Long M3 30MML Screw to the Crumbliser with an M3 Nut.

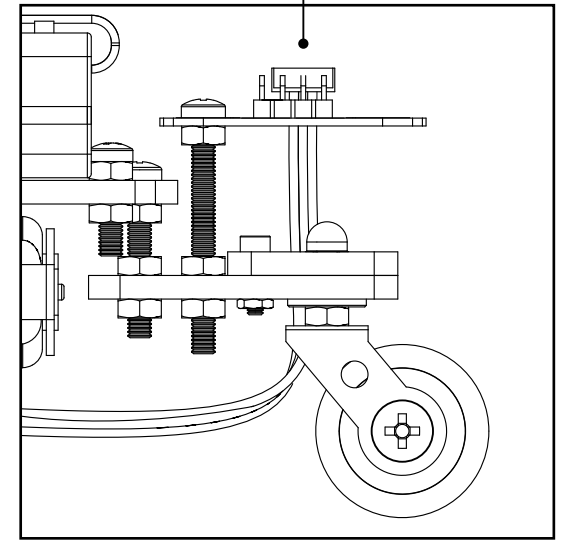
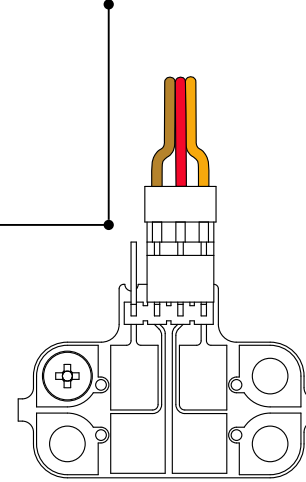


Add an M3 Nut to the M3 X 30MM L Screw as shown.

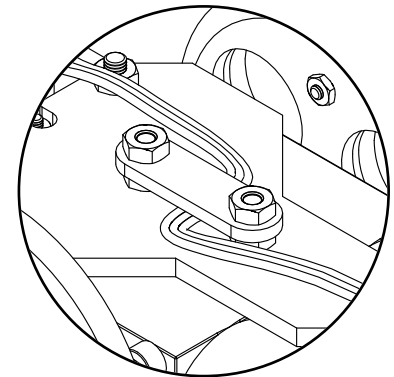
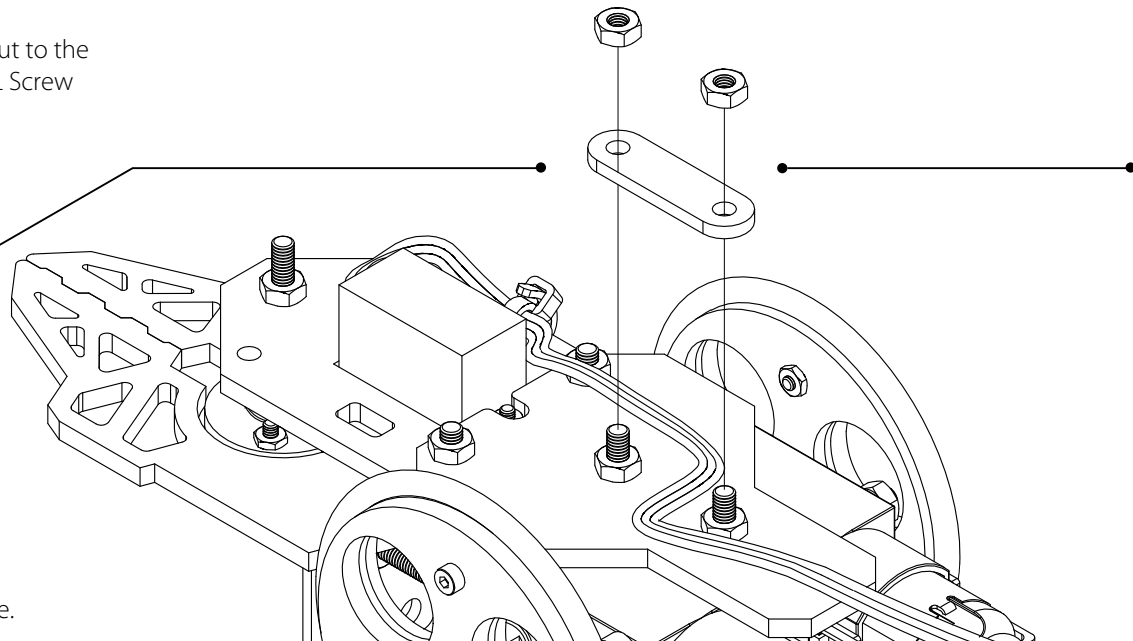
11. Attach the Crumbliser assembly to the CRV Castor Mount.



Connect the Servo Plug to the 3 pins as shown.

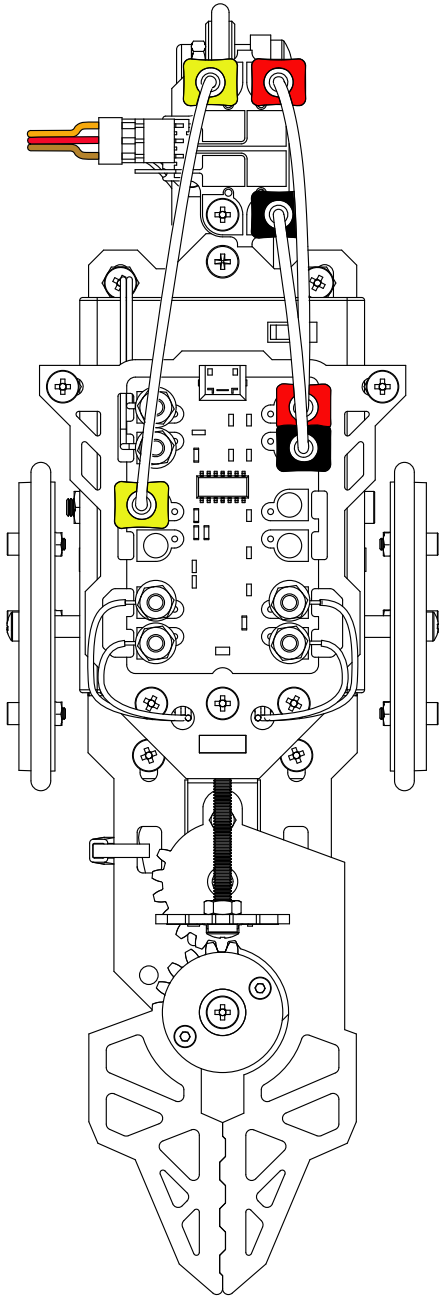


12. Ensure Servo Wire is positioned between the machine screws and then fit Retaining Plate.

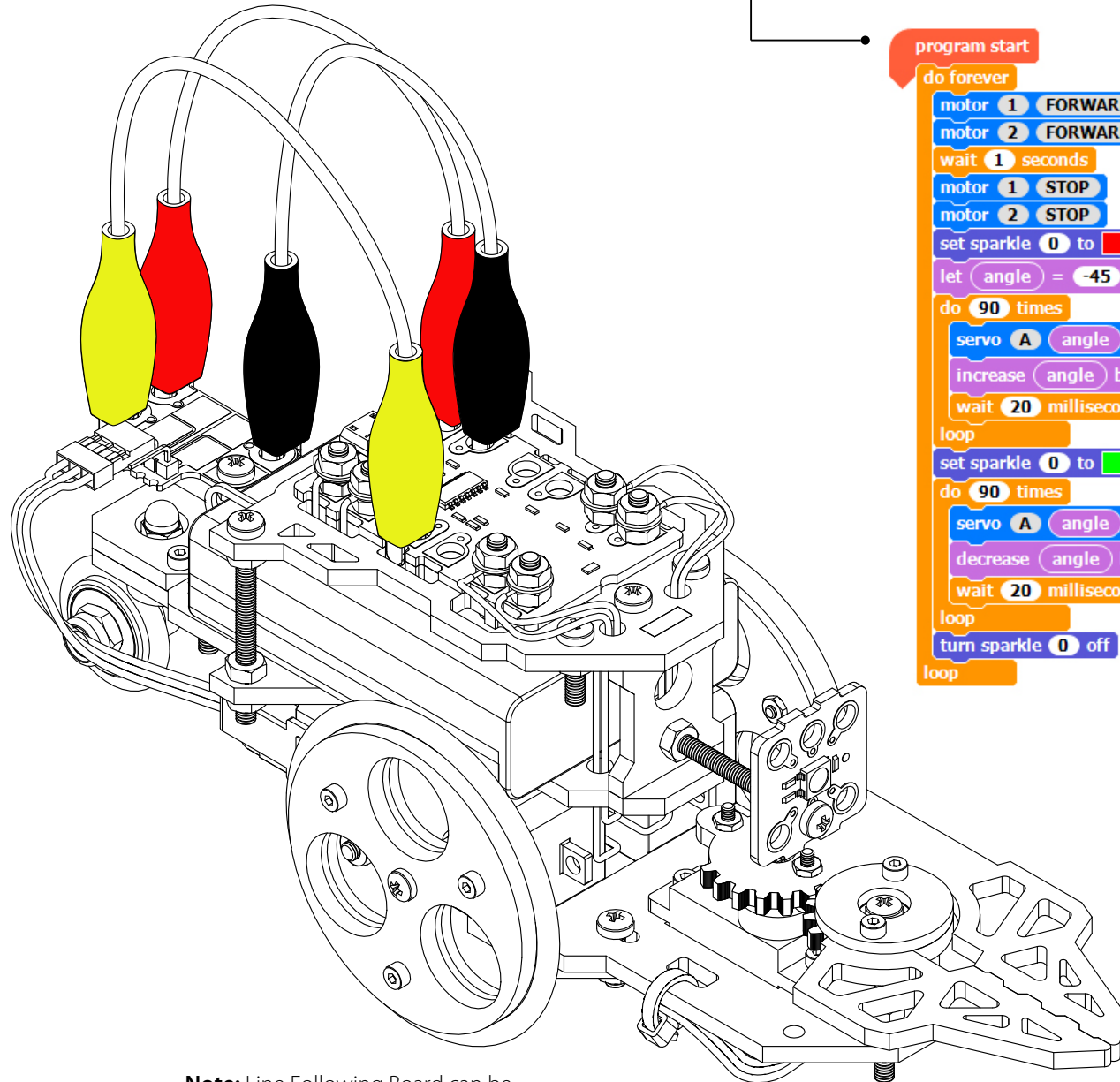


Stage 04_Connecting Crocodile Leads and Programming the Jaws: Top Tips - Program CRV_JAWS to complete retrieval missions!

13. Connect Crocodile Leads as shown.



14. Create the following program to activate the Jaws and a sparkle!



```
program start
do forever
  motor 1 FORWARD at 75 %
  motor 2 FORWARD at 75 %
  wait 1 seconds
  motor 1 STOP
  motor 2 STOP
  set sparkle 0 to [red]
  let angle = -45
  do 90 times
    servo A angle degrees
    increase angle by 1
    wait 20 milliseconds
  loop
  set sparkle 0 to [green]
  do 90 times
    servo A angle degrees
    decrease angle by 1
    wait 20 milliseconds
  loop
  turn sparkle 0 off
loop
```

Note: Line Following Board can be mounted to the Servo Mount.