

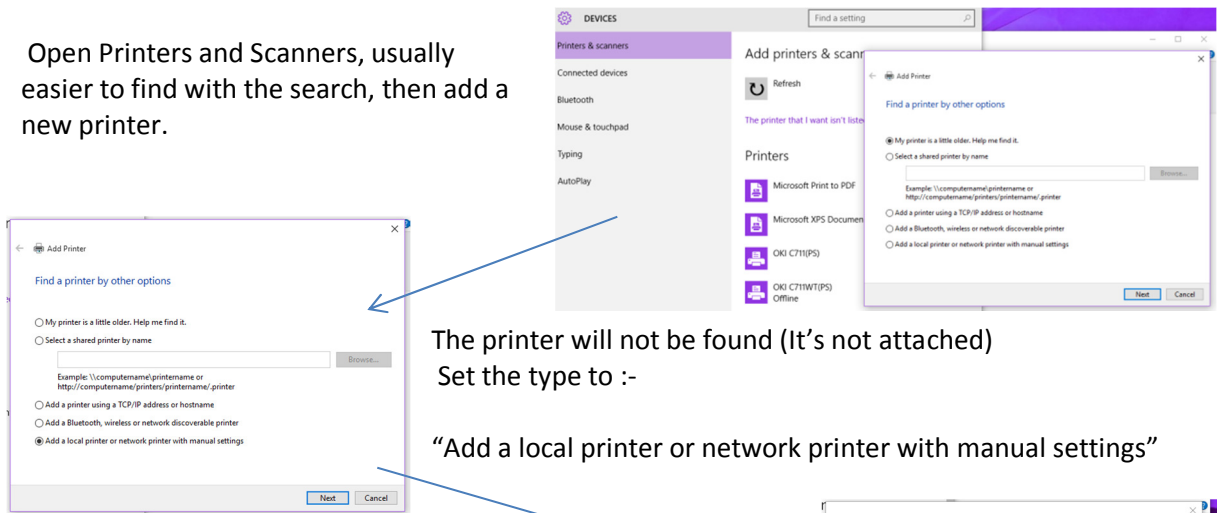
Installing Printer drivers on Windows 10

The method is basically the same as windows 8. If an OKI printer is attached without a driver pre-installed then the generic (and useless) PCL6 driver is installed. This can be a problem to remove and is usually best left. Install the PS driver for the OKI in use onto LPT1 so it is not detected and then set the port to the same USB port as the generic OKIDATA driver.

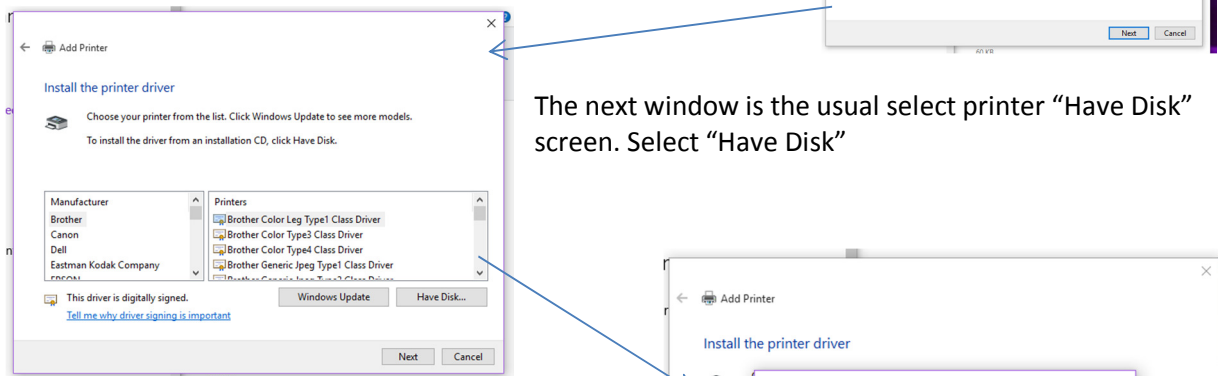
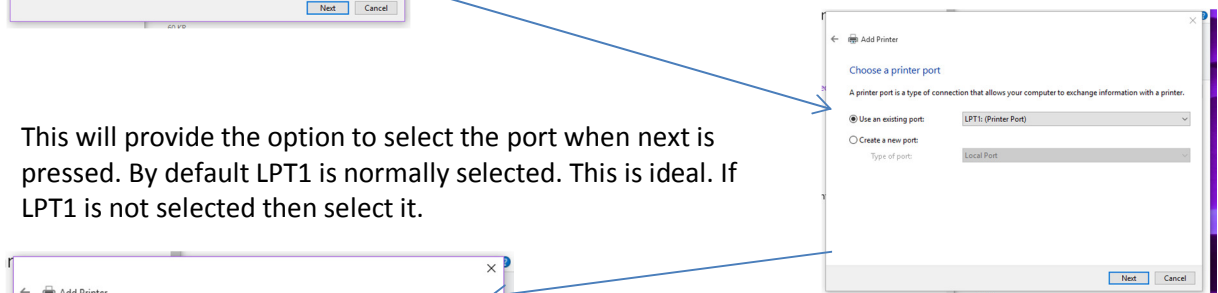
For the C711wt pre-install the driver.

For other TMT OKI drivers (C610/C57**/C821/C8800 etc.) where no updated Windows 10 PS driver exists, install the driver on LPT1 before attaching the printer.

Open Printers and Scanners, usually easier to find with the search, then add a new printer.

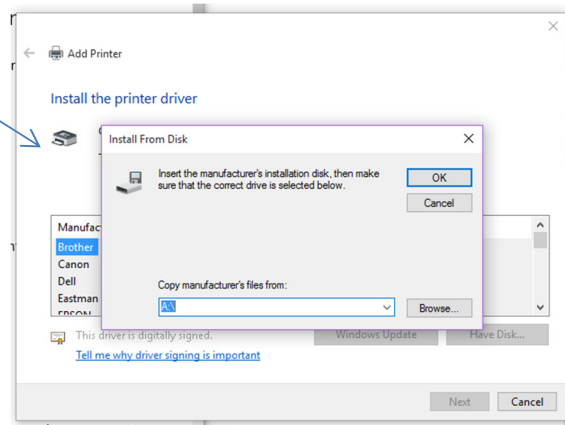


This will provide the option to select the port when next is pressed. By default LPT1 is normally selected. This is ideal. If LPT1 is not selected then select it.

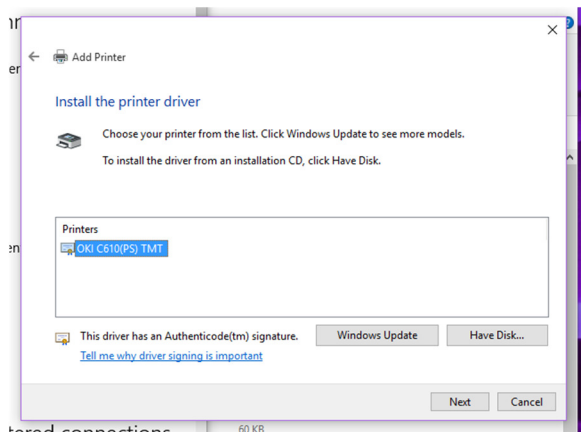
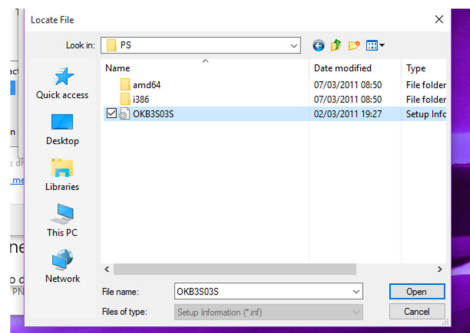


Now browse to the TMT driver CD or unpacked download in a folder.

Depending on the driver layout select,
1, Language
2, driver type, PS (postscript) recommended
Then click OK

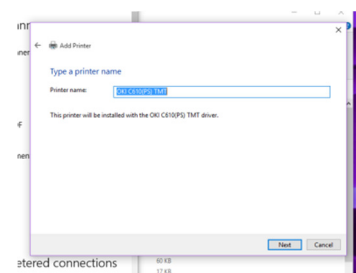


Here the inf file for an OKI C610 is select in the English PS folder.



When selected the next window shows the selection ready to install.

Click next to install.



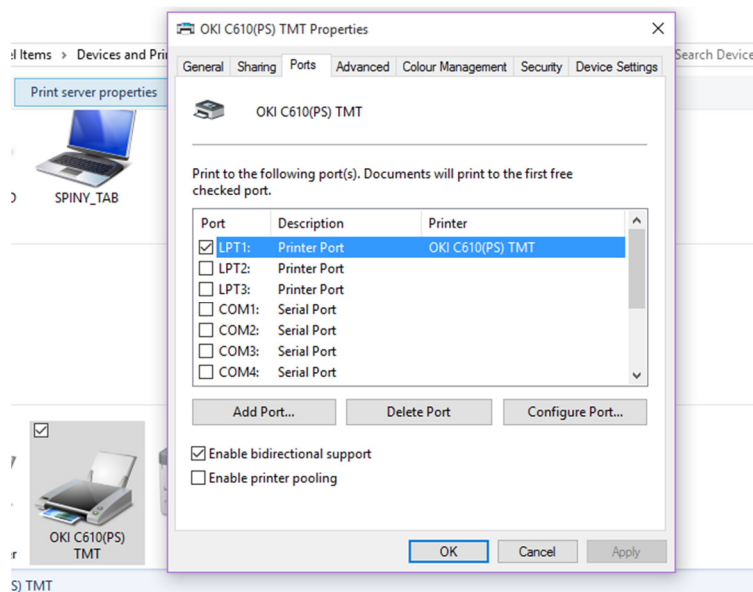
Once Installed the next stage depends on if the printer has been attached. If the TMT printer was attached without a driver and the generic OKIDATA PCL driver has installed itself in the printers folder then change the port of the TMT printer.

Right click on the TMT printer driver and select "Printer Properties"

Select the Ports tab.

Here the current selection is shown. Scroll down and find the USB port the Generic OKIData driver is on and set the TMT driver to the same port.

The printer is now ready and can have its settings from the TMT installer applied if needed.



If the printer was not attached, attach it now and with a bit of luck Windows will notice it has an already installed driver and use that to install the printer. If this happens then you will have a correctly installed printer.

Sometimes Windows prefers to install the generic driver, this is most likely to happen with older printers and here you will need to change the port of the installed driver to the one selected for the generic driver.

This is an initial guide based on an early windows 10 upgrade installation. There may well be changes as time passes and windows changes.